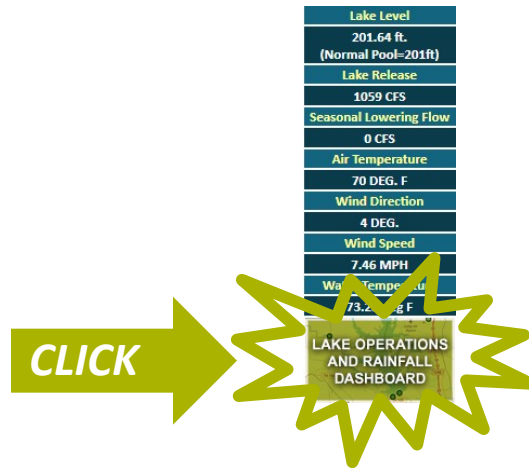




How To Access SJRA's Lake Operations and Rainfall Dashboard

Step 1 Go to: www.sjra.net

Step 2 Click on: "[Lake Operations and Rainfall Dashboard](#)" tab at the bottom of the Current Conditions box at the top right:



Or

Click on the scrolling image bar at the top left:



Step 3 Once you've reached the Dashboard, click on the "[Dashboards](#)" link at the top of the page:





How To Access SJRA's Lake Operations and Rainfall Dashboard

Step 4 If you desire to see Lake Level, Releases, Rainfall Basin Totals, and Lake Conditions, click on "[Lake Conroe](#)" tab:

The screenshot shows a 'Dashboards' header with a refresh icon. Below it is a table with two rows. The first row has 'Event Monitoring' and 'Summary'. The second row has 'Lake Conroe' and 'Summary'. A green starburst and a green arrow pointing left with the word 'CLICK' are overlaid on the 'Lake Conroe' tab. A 'Category' dropdown menu is visible in the top right corner.

Dashboard	Summary
Event Monitoring	Summary
Lake Conroe	Summary

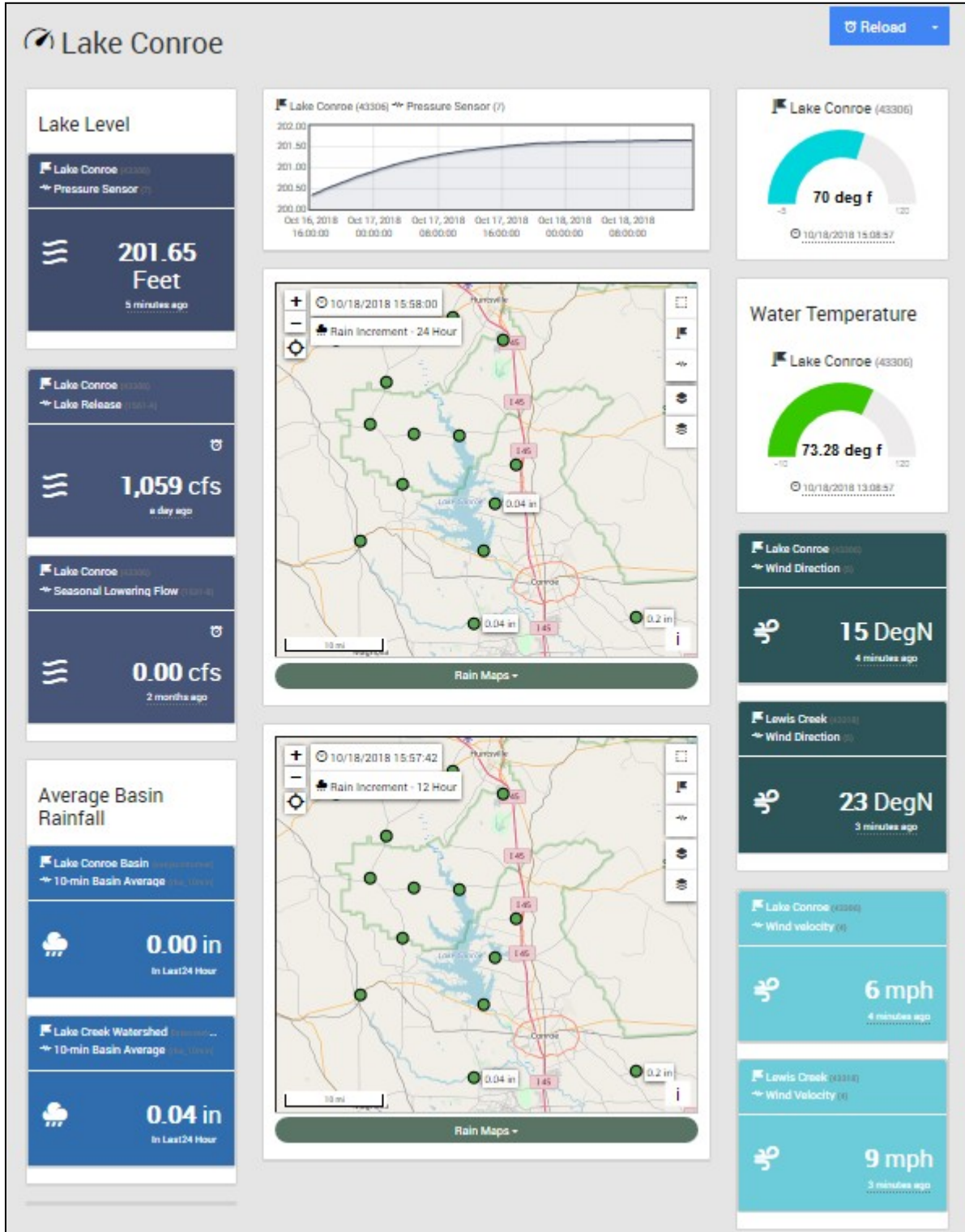
Step 5 Optional – If you desire to have quick access to a number of stream flow gauges both north and south of the Lake Conroe Dam, click on "[Event Monitoring](#)" tab:

The screenshot shows a 'Dashboards' header with a refresh icon. Below it is a table with two rows. The first row has 'Event Monitoring' and 'Summary'. The second row has 'Lake Conroe' and 'Summary'. A green starburst and a green arrow pointing left with the word 'CLICK' are overlaid on the 'Event Monitoring' tab. A 'Category' dropdown menu is visible in the top right corner.

Dashboard	Summary
Event Monitoring	Summary
Lake Conroe	Summary



How To Access SJRA's Lake Operations and Rainfall Dashboard



Example of Lake Conroe Dashboard (imagery date 10/18/2018):



Helpful Links

- (1) For rainfall information, visit Harris County Flood Control's Flood Warning System (FWS) - <https://www.harriscountyfws.org/>
- (2) For river forecast information, visit the National Weather Service's Advanced Hydrologic Prediction Service site - <https://water.weather.gov/ahps2/index.php?wfo=hgx>
- (3) Montgomery County Office of Emergency Management - <http://mctxoem.org/>
- (4) USGS Texas Water Dashboard - <https://txpub.usgs.gov/txwaterdashboard/>
- (5) Weather Underground - <https://www.wunderground.com>
- (6) Lake Creek at Sendera Ranch Gage site - https://waterdata.usgs.gov/nwis/uv?site_no=08067920
- (7) SJRA Contrail System - <https://sanjacinto.onerain.com/home.php>
- (8) FEMA Map Service Center – official resource for Flood Insurance Rate maps - <https://msc.fema.gov/portal/search?AddressQuery=woodlands%20texas#searchresultsanchor>
- (9) Montgomery County National Flood Hazard Layer Viewer – has parcel map overlays. <http://moco.maps.arcgis.com/apps/webappviewer/index.html?id=cd03f1d7f1f74889af7a75d79a80f4b4>
- (10) USGS Texas dashboard with river gage data – <https://txpub.usgs.gov/txwaterdashboard>
- (11) Sign up for USGS Water Alert Text/email notifications - <https://maps.waterdata.usgs.gov/mapper/wateralert/>
- (12) NWS Houston main hydrology website - <https://water.weather.gov/ahps2/index.php?wfo=hgx>
- (13) NWS website for Lake Creek Above the Woodlands (Sendera Ranch Rd) includes forecast data- <https://water.weather.gov/ahps2/hydrograph.php?wfo=hgx&gage=fcwt2>
- (14) Floodplain Management webpage - https://www.mctx.org/departments/departments_d_-_f/engineering/fema_floodplain_maps.php
- (15) Alert MCTX Register at - <https://www.smart911.com/smart911/registration/registrationLanding.action>
- (16) FEMA NFIP flood insurance - <https://www.fema.gov/national-flood-insurance-program>
- (17) Montgomery County Harvey information - <http://moco.maps.arcgis.com/apps/MapSeries/index.html?appid=4023a0458ce04e4a8e598d0c2553a92f>
- (18) Video of the Wards Floodplain model viewer - <https://www.fema.gov/media-library/assets/videos/169496>